

FINAL

Ελευθ. Μοσχ. **49 - 60** ΑΣ Πέρα

54% 7 / 13 FT 9 / 12 75%

52% 15 / 29 2p 21 / 44 48%

20% 4 / 20 3p 3 / 25 12%

38 31 - 7 Rb 25 - 16 41

20 Tu 12

Referees: Μαυρέλης - Χρόνης

| Each Period | 1st | 2nd | 3rd | 4th |
|--------------|-----|-----|-----|-----|
| Ελευθ. Μοσχ. | 19 | 11 | 15 | 4 |
| ΑΣ Πέρα | 15 | 19 | 13 | 13 |

| End of Period | 1st | 2nd | 3rd | 4th |
|---------------|-----|-----|-----|-----|
| Ελευθ. Μοσχ. | 19 | 30 | 45 | 49 |
| ΑΣ Πέρα | 15 | 34 | 47 | 60 |



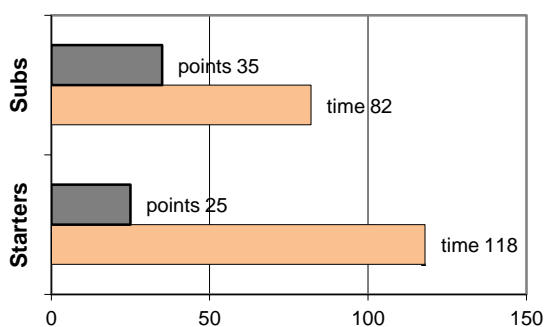
Coach: Γκαναβίας Π. - Φέρτης Ηλ.

Α.Σ. ΠΕΡΑ

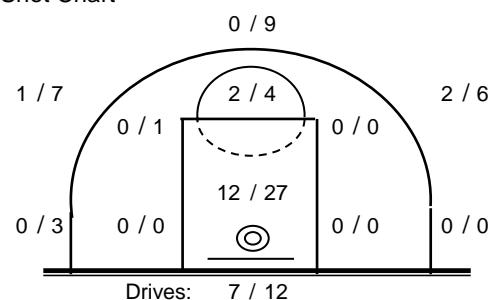
Fast Breaks 10 / 11

| # Player | Time (min) | Points | Ft | 2p | 3p | +/- | Rebs | | As | St | Tu | Bl | Fouls | | Rkg* | |
|-----------------------|------------|--------|--------|---------|--------|-----|------|----|----|----|----|----|-------|----|------|---|
| | | | | | | | de | of | | | | | Wo | Co | | |
| 4 0 | 0 | 0 | 0 / 0 | 0 / 0 | 0 / 0 | 0 | 0 | 0 | 0 | 0 | 0 | 0 | 0 | 0 | 0 | - |
| 5 Θεολογίτης Σ. | 33 | 13 | 1 / 1 | 6 / 9 | 0 / 3 | 5 | 4 | 0 | 4 | 3 | 0 | 0 | 4 | 2 | 18 | |
| 16 Λάμπρου Π. | 12 | 4 | 0 / 0 | 2 / 3 | 0 / 1 | 12 | 2 | 1 | 0 | 1 | 2 | 1 | 0 | 2 | 5 | |
| 7 Καδηγιαννόπουλος Γ. | 12 | 3 | 0 / 0 | 0 / 1 | 1 / 1 | 13 | 1 | 0 | 0 | 0 | 1 | 1 | 0 | 3 | 3 | |
| 8 Ζέγγος Θ. | 35 | 0 | 0 / 0 | 0 / 3 | 0 / 5 | 2 | 1 | 0 | 7 | 3 | 0 | 0 | 2 | 1 | 3 | |
| 18 Οικονόμου Μ. | 14 | 0 | 0 / 0 | 0 / 1 | 0 / 3 | 9 | 1 | 1 | 0 | 0 | 0 | 0 | 0 | 1 | - | |
| 10 Φωτόπουλος Θ. | 27 | 16 | 5 / 7 | 4 / 6 | 1 / 5 | 28 | 3 | 1 | 5 | 5 | 3 | 0 | 4 | 1 | 19 | |
| 11 Καμπούρης Θ. | 11 | 2 | 0 / 0 | 1 / 4 | 0 / 0 | -1 | 3 | 2 | 0 | 0 | 0 | 1 | 2 | 1 | 5 | |
| 12 Πιτούλης Αχ. | 23 | 5 | 1 / 2 | 2 / 5 | 0 / 3 | -9 | 4 | 5 | 0 | 4 | 1 | 0 | 5 | 1 | 10 | |
| 13 Σωτηράκης Κ. | 17 | 12 | 2 / 2 | 5 / 9 | 0 / 2 | 7 | 2 | 3 | 0 | 1 | 3 | 0 | 2 | 1 | 9 | |
| 14 0 | 0 | 0 | 0 / 0 | 0 / 0 | 0 / 0 | 0 | 0 | 0 | 0 | 0 | 0 | 0 | 0 | 0 | - | |
| 15 Βουρδέλης Γ. | 16 | 5 | 0 / 0 | 1 / 3 | 1 / 2 | -11 | 3 | 3 | 0 | 0 | 1 | 0 | 1 | 1 | 7 | |
| Team | | | | | | | 1 | 0 | | | 1 | 0 | 0 | | | |
| 1st quarter | | 15 | 2 / 3 | 5 / 12 | 1 / 7 | 7 | 4 | 3 | 2 | 1 | 1 | 5 | 0 | 17 | | |
| 2nd quarter | | 19 | 1 / 2 | 6 / 10 | 2 / 5 | 6 | 1 | 5 | 4 | 4 | 1 | 4 | 6 | 24 | | |
| 3rd quarter | | 13 | 3 / 4 | 5 / 12 | 0 / 6 | 6 | 6 | 4 | 5 | 3 | 1 | 6 | 5 | 18 | | |
| 4th quarter | | 13 | 3 / 3 | 5 / 10 | 0 / 7 | 6 | 5 | 4 | 6 | 4 | 0 | 5 | 3 | 18 | | |
| Final Stats | 200 | 60 | 9 / 12 | 21 / 44 | 3 / 25 | 55 | 25 | 16 | 16 | 17 | 12 | 3 | 20 | 14 | 77 | |
| | | | 75% | 48% | 12% | | 41 | | | | | | | | | |

Starters- Subs ratio



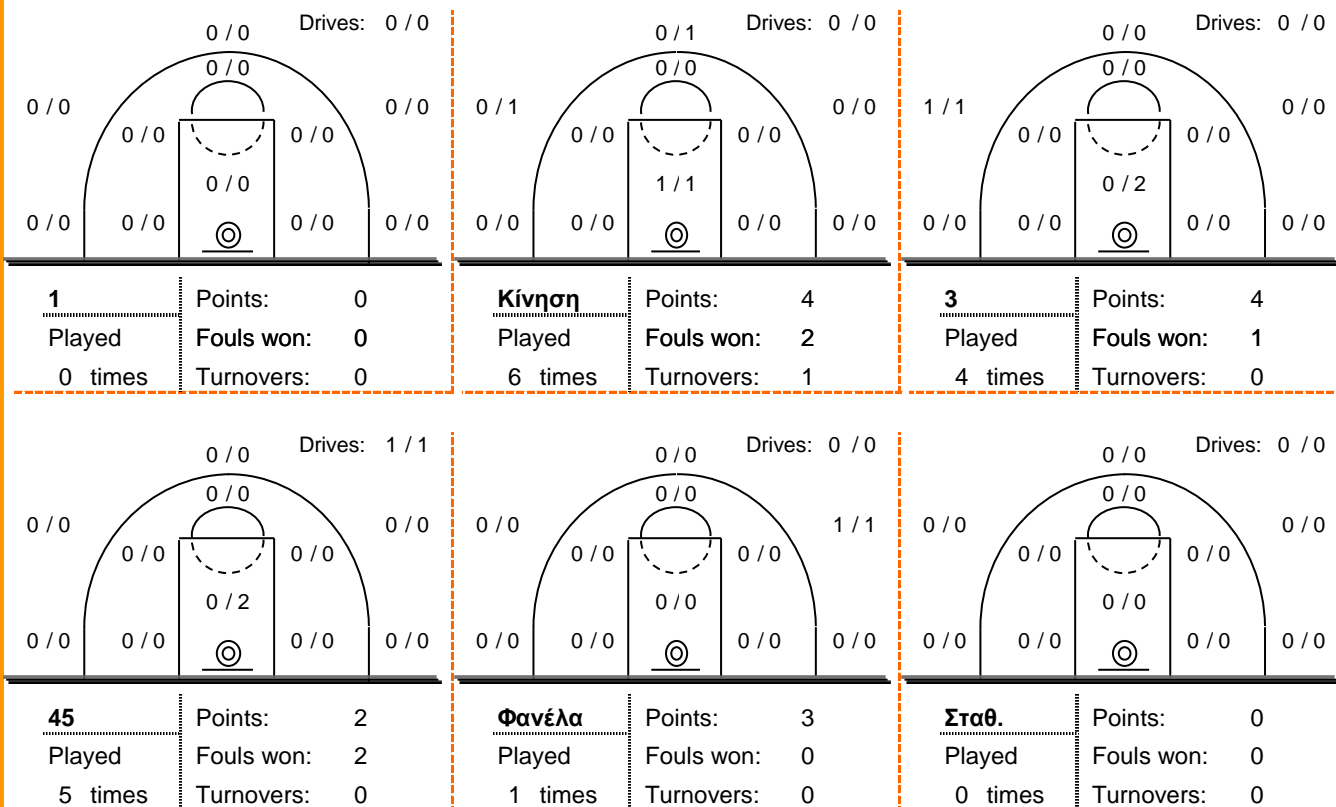
Shot Chart



*Ranking= Pts+Rebs+As+St+B-Mished Shots-Tu (Time Played>7min.)

Offense Analysis

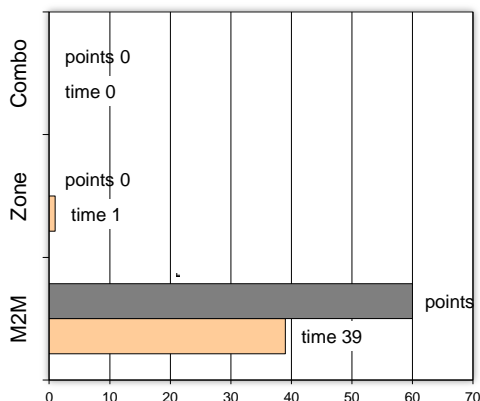
Play performance:



Against Defense Types:

Turnovers:

Fast breaks:



Έγιναν 12 λάθη
0 ήταν χρονικές υπερβάσεις,
0 ήταν παραβάσεις γραμμών,
11 ήταν λάθη κατοχής και
1 ήταν βήματα ή μεταφορά.

Επετεύχθησαν 10 αιφνιδιασμοί
4 ήταν πρωτεύοντες
0 ήταν δευτερεύοντες
6 προήλθαν από λάθος
 του αντιπάλου

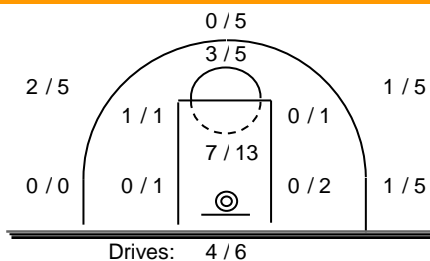
Πραγματοποιήθηκαν συνολικά 86 επιθέσεις, με απόδοση 0.70
 έναντι 77 επιθέσεων των αντιπάλων.

Defense Analysis

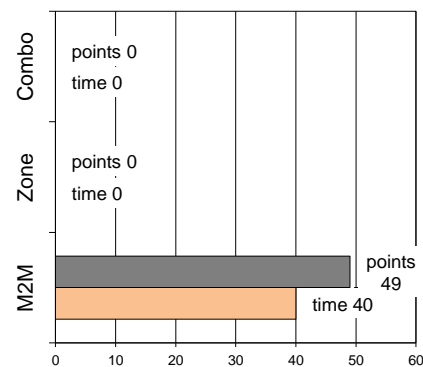
Ελευθ. Μοσχ.

| | |
|---------------------------|--------------|
| 19 Παλουκάκος Μ. | 2 |
| 5 Μαρκουίζος Γ. | 12 |
| 6 Παυλιάς Δ. | 0 |
| 17 Γιαννόπουλος Θ. | 1 |
| 8 Φέλλας Ευ. | 0 |
| 9 Βασιλείου Μ. | 10 |
| 10 Τζαφέρης Χρ. | 5 -1 |
| 11 Λύτρας Ν. | 4 |
| 12 Κρεμαστούλης Ζ. | 0 |
| 13 Νικολαΐδης Π. | 5 -1 |
| 14 Σιδηρόπουλος Λ. | 10 -2 |
| 15 Γιαννόπουλος Μ. | 0 |

Opponent's shot chart

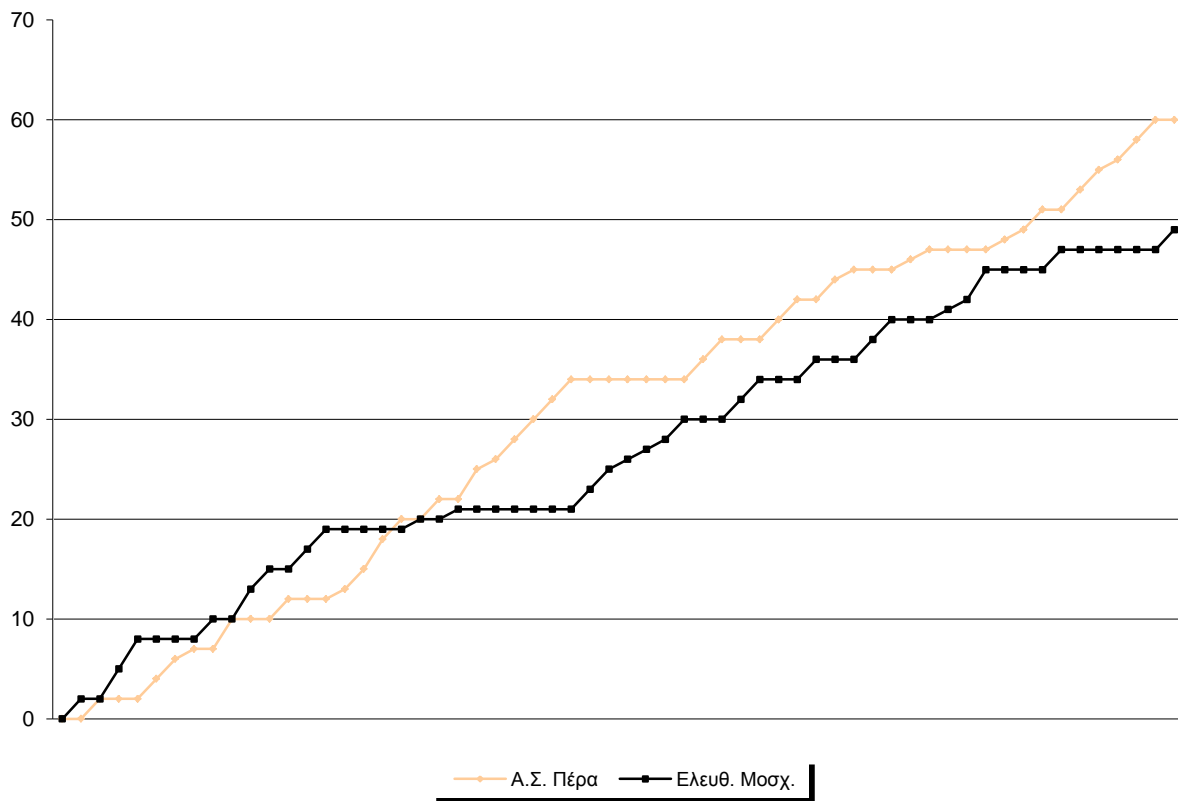


Defense Types Performance

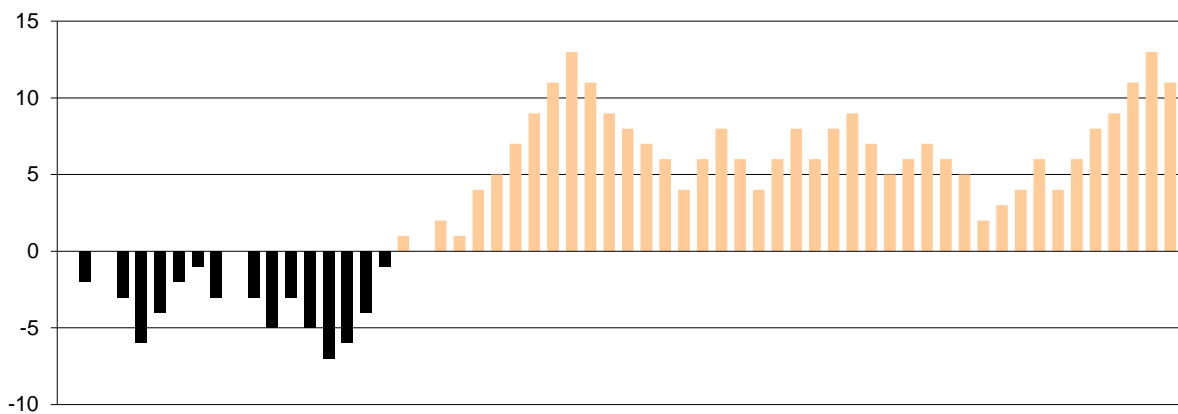


Graphic Stats

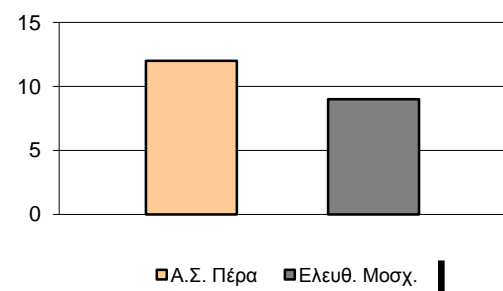
Score Evolution



Score Difference



Largest Scoring Run



Notes